



HAPI™ travel 新加坡

Singapore



HAPI 4days 3Nights Package

Travel Period / 旅遊日期: 03/10-31/12/2023

Package Include 套票包括:

- ~ CATHAY PACIFIC AIRWAYS (Q Class) Economy Class Roundtrip Ticket
國泰(Q艙)來回經濟客艙機票
- ~ 3Nights stay Hotel Accommodation (include Breakfast)
三晚酒店住宿 (包括早餐)
- ~ One Way Transfer between Airport and Hotel (seat in coach)
單程機場至酒店(併車)



High Seasons Ticket Surcharge 機票旺季附加費

11-12/102023 : +HKD1400

(Booking Class 訂位艙號: S)

19-26/12/2023 : +HKD2450

(Booking Class 訂位艙號: L)

Weekend offer :

- * Departure on Friday or Saturday to get Gardens by the Bay Admission Tickets.
(Ticket include Avatar: The Experience at Cloud Forest + Flower Dome)

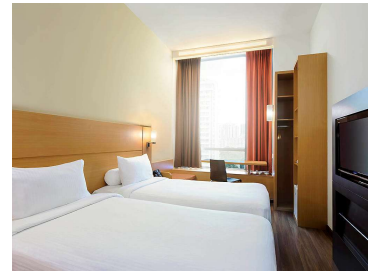


IBIS Singapore Novena

Website : <https://ibisnovena.sg-singapore.com/en/>

HKD3880^{up/起}

Superior Room
Twin Sharing Base / 每人佔半房



HKD1040

Extension Nights (per room per night) 延長住宿(每房每晚)

Hotel Close-out date : 30-31Dec2023

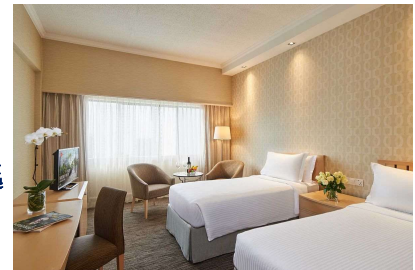


York Hotel

Website : <https://www.yorkhotel.com.sg/>

HKD4980^{up/起}

Superior Room
Twin Sharing Base / 每人佔半房



HKD1720

Extension Nights (per room per night) 延長住宿(每房每晚)

Hotel Close-out date : 24-25Dec, 30-31Dec2023



Weekend offer :

* Departure on Friday or Saturday to get Gardens by the Bay Admission Tickets.
(Ticket include Avatar: The Experience at Cloud Forest + Flower Dome)



Studio M

Website : <https://www.millenniumhotels.com/en/singapore/studio-m-hotel/?cid=gplaces-studio-m-hotel>

HKD5180_{up/起}

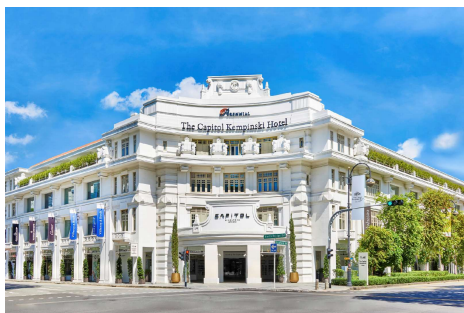
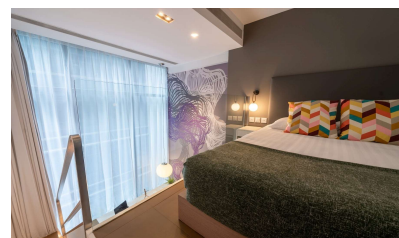
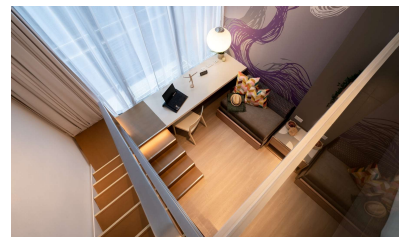
Premier Loft

Twin Sharing Base / 每人佔半房

HKD1850

Extension Nights (per room per night) 延長住宿(每房每晚)

Hotel Close-out date : 24-25Dec, 30-31Dec2023



The Capitol Kempinski Hotel Singapore

Website : <https://www.kempinski.com/en/the-capitol-singapore>

HKD6980_{up/起}

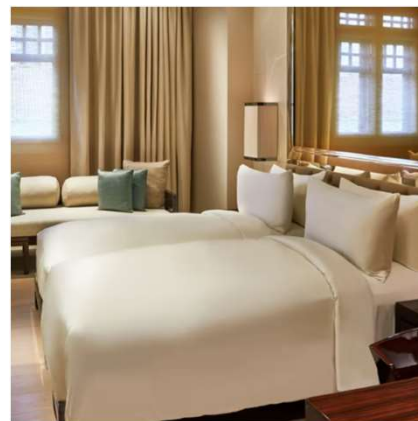
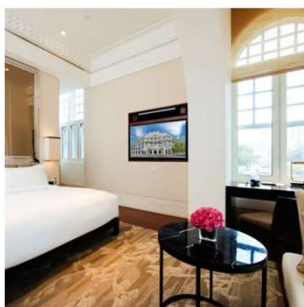
Deluxe Room

Twin Sharing Base / 每人佔半房

HKD3090

Extension Nights (per room per night) 延長住宿(每房每晚)

Hotel Close-out date : 29Dec2023



Remarks :

1. Package price is calculated in Hong Kong dollars per person and at least 2 adults traveling together.
2. The above prices are calculated based on the designated airlines and booking class on the flyer. The price is based on the day of booking, and the price varies depending on the individual departure date and travel with other airlines. Please contact our staff for enquiry.
3. Price is based on low season for reference only. Supplement will be applied during high season, holidays or event dates. Please contact our staff for enquiry.
4. Package include 0.15% TIA Levy
5. Prices do not include airport taxes, fuel surcharges and Hong Kong airport security fees.
6. Reservation must be made at least 7 working days prior to departure.
7. For reservation made within 10 working days prior to departure, a nonrefundable full payment is required.
8. Once the package is confirmed, no changes, transfers or refunds will be accepted.
9. All prices will be adjusted due to supply and hotel price fluctuations. The company reserves the right to change or revise the terms and conditions of the promotion at any time without prior notice.

備註:

1. 套票售價以港幣每位計算及適用於最少2位成人同行。
2. 以上價錢均以單張上指定航空公司及訂位艙號機位計算，機位之訂位情況需按報名當天為準，而個別出發日期的價格有所不同或如欲轉乘其它航空公司，歡迎與本社職員查詢。
3. 套票以淡季價格計算，於旺季、假期前夕或大型節日期間出發，需另付附加費。詳情向本社職員查詢作準。
4. 套票包括0.15% 旅遊業協會賠償基金
5. 售價並不包括各地之機場稅、燃油附加費及香港機場保安費。
6. 所有訂位手續須於出發前不少於7個工作天內完成辦理。
7. 凡於出發前10個工作天內辦理預訂手續，須繳付所有款項。已付之費用概不退還。
8. 套票一經確認後，恕不接受任何更改、轉讓或退款。
9. 所有價格會因應供應量、酒店價格浮動而有所調整，本公司保留權利隨時更改或修訂優惠條款及細則，恕不另行通知。